

# FINANCIAL FACT BOOK

フィナンシャル ファクトブック



## 目次

## Contents

1	連結財務ハイライト	Consolidated Financial Highlights
2	四半期推移（連結）	Quarter by Trend (Consolidated)
3	販売費及び一般管理費内訳	Selling, General and Administrative Expenses
4	成長性・収益性	Growth & Profitability
5	効率性	Efficiency
6	安定性	Stability
7	クラウド・ホスティング事業	Cloud Hosting Segment
8	セキュリティ事業	Internet Security Segment
9	ソリューション事業	Solution Segment
10	株式情報	Stock Information
11	会社概要	Corporate Profile

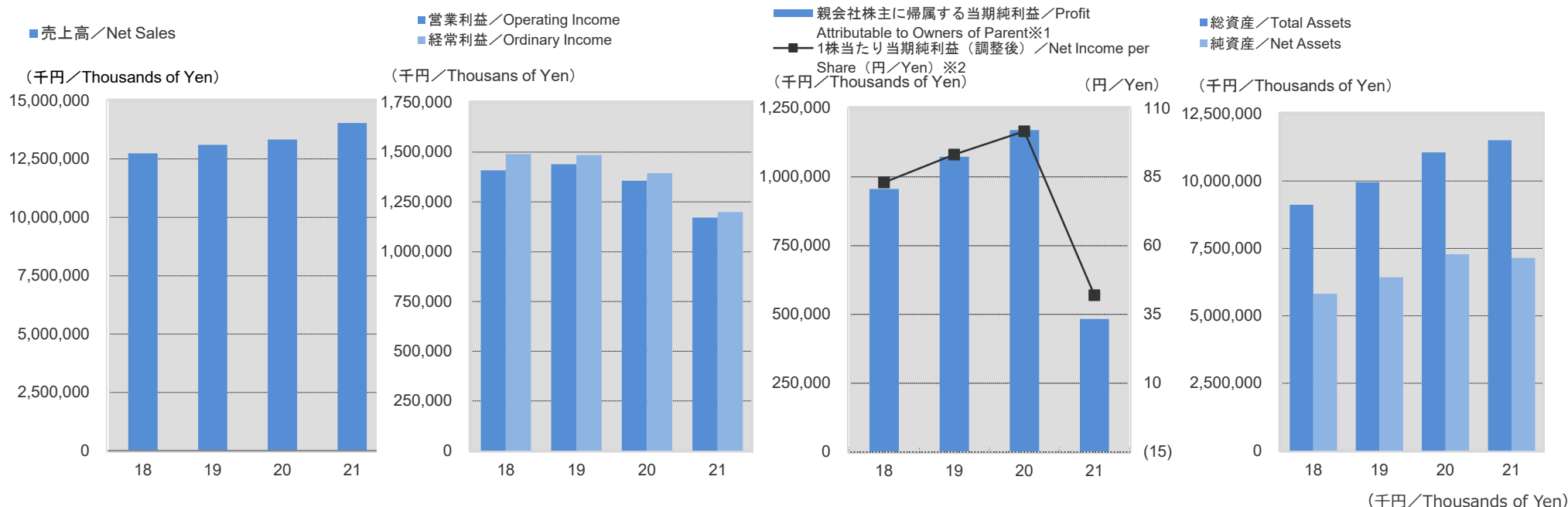
## 免責事項/Disclaimer

- 本資料の内容は、作成日時点において、一般的に認識されている経済・社会等の情勢ならびに当社が合理的と判断した一定の前提に基づいて作成されておりますが、経営環境の変化等の事由により、予告なしに変更される可能性があります。
- 本資料及びその記載内容について、当社の書面による事前の同意なしに、第三者がその他の目的で公開または利用することはできません。

•The numbers on this document were written based on GMO GlobalSign Holdings K.K. calculated data reasonably under the economic and social circumstances; however, there is possibility to catch-up adjustment without notice if necessary.

•Forbid disclose and reuse the contents written on this document without permission for GMO GlobalSign Holdings K.K. strictly.

# 連結財務ハイライト／Consolidated Financial Highlights



会計年度／Fiscal Year

	2018/12	2019/12	2020/12	2021/12
売上高／Net Sales	12,738,877	13,109,578	13,332,684	14,046,171
売上総利益／Gross Profit	7,850,886	8,112,242	7,953,227	8,442,322
営業利益／Operating Income	1,408,535	1,439,433	1,357,154	1,171,710
経常利益／Ordinary Income	1,490,502	1,485,724	1,394,007	1,199,868
親会社株主に帰属する当期純利益／Profit Attributable to Owners of Parent※1	956,562	1,073,365	1,170,543	483,618
1株当たり当期純利益（調整後）／Net Income per Share (円/Yen) ※2	83.04	93.18	101.62	41.98
総資産／Total Assets	9,123,183	9,954,513	11,063,178	11,512,704
純資産／Net Assets	5,819,058	6,434,792	7,288,881	7,152,554
営業活動によるキャッシュ・フロー／Cash Flows from Operating Activities	1,878,400	1,693,763	1,902,717	1,564,832
投資活動によるキャッシュ・フロー／Cash Flows from Investing Activities	(361,699)	(891,275)	(1,158,500)	(1,191,625)
財務活動によるキャッシュ・フロー／Cash Flows from Financing Activities	(547,349)	(671,132)	(64,609)	(822,038)

※1 2016年12月期より、「当期純利益」を「親会社に帰属する当期純利益」と記載しています。／Until FY2015, "Net Income" is documented.

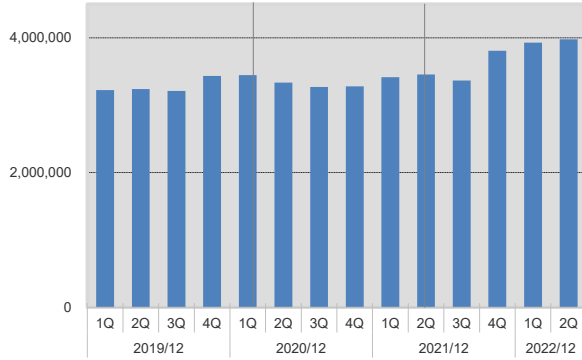
※2 当社は2014年4月1日を効力発生日として普通株式1株につき100株の割合で株式分割を行っています。／We conducted a 100-for-1 share split which became effective as of April 1, 2014.

1株当たり当期純利益は当該株式分割後の数値を記載しています。／Net income per share is based on the number of shares after the stock splits.

## 四半期推移（連結）／Quarter by Trend（Consolidated）

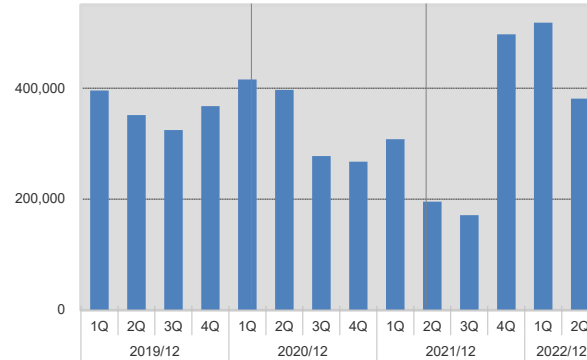
売上高／Net Sales

(千円／Thousands of Yen)



営業利益／Operating Income

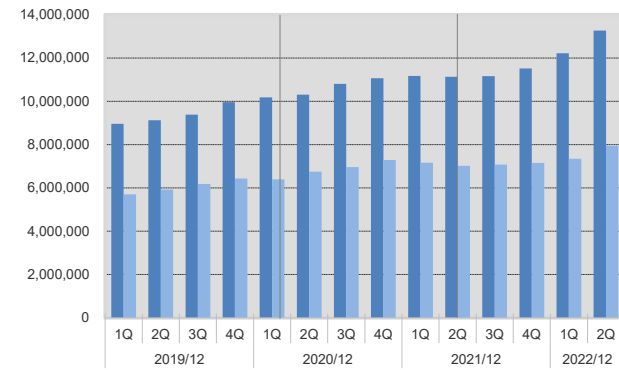
(千円／Thousands of Yen)



■総資産／Total Assets

■純資産／Net Assets

(千円／Thousands of Yen)

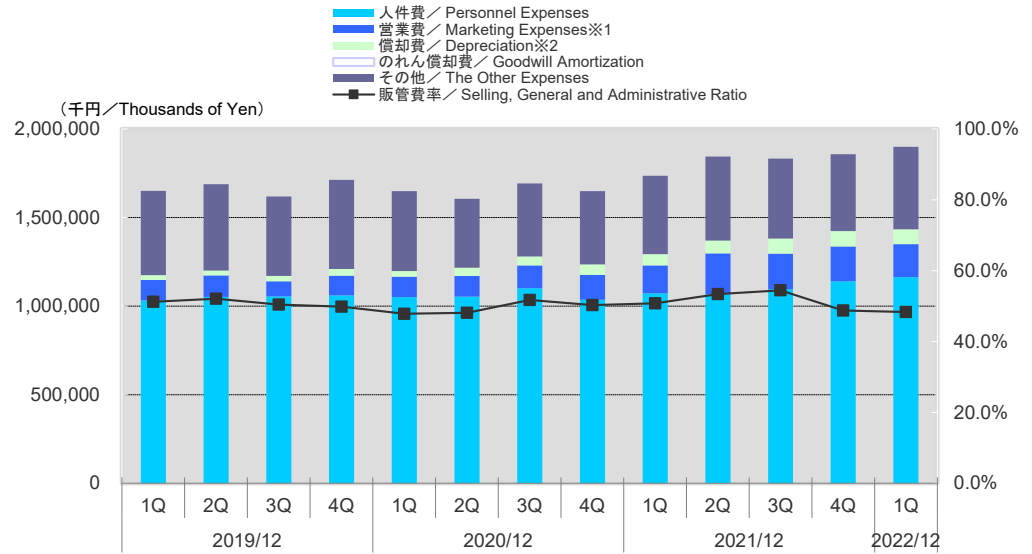
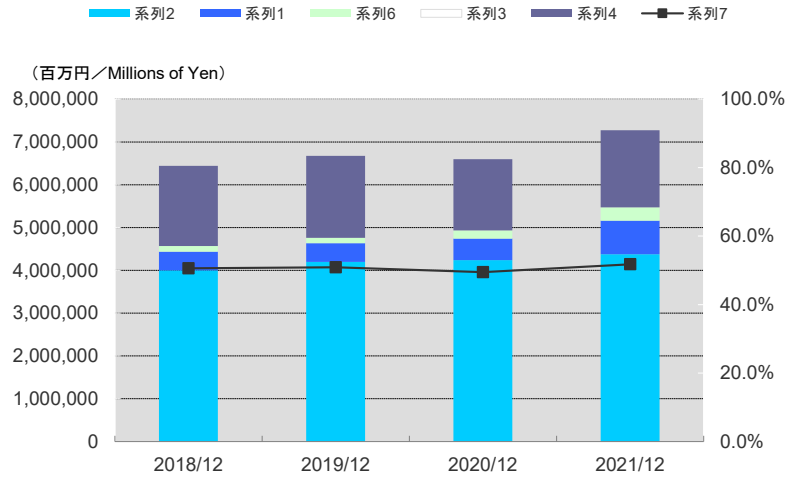


会計年度／Fiscal Year (千円／Thousands of Yen)	2019/12				2020/12				2021/12				2022/12			
	1Q	2Q	3Q	4Q	1Q	2Q	3Q	4Q	1Q	2Q	3Q	4Q	1Q	2Q	3Q	4Q
売上高／Net Sales	3,222,879	3,239,801	3,212,545	3,434,352	3,445,235	3,336,696	3,271,062	3,279,690	3,417,130	3,455,327	3,364,963	3,808,749	3,929,040	3,977,426	3,947,380	
売上原価／Cost of Sales	1,175,918	1,199,675	1,268,595	1,353,147	1,381,051	1,333,589	1,301,254	1,363,561	1,373,152	1,414,941	1,361,451	1,454,304	1,511,345	1,535,807	1,586,690	
売上総利益／Gross Profit	2,046,961	2,040,126	1,943,950	2,081,205	2,064,184	2,003,106	1,969,807	1,916,128	2,043,978	2,040,385	2,003,512	2,354,445	2,417,694	2,441,618	2,360,689	
EBITDA	423,597	379,214	355,089	406,307	447,368	442,857	328,284	327,248	372,211	267,417	256,865	584,202	602,518	482,144	222,128	0
償却費／Depreciation and amortization※1	27,805	27,842	30,646	38,481	31,765	46,064	50,862	59,914	64,162	72,034	85,773	87,019	84,271	100,727	112,125	
のれん償却費／Goodwill amortization	0	0	0	0	0	0	0	0	0	0	0	0	249	249	249	
営業利益／Operating Income	395,791	351,372	324,443	367,826	415,603	396,793	277,422	267,334	308,049	195,383	171,092	497,183	517,998	381,168	109,754	
経常利益／Ordinary Income	396,433	357,454	338,789	393,048	493,010	428,994	257,809	214,193	293,980	196,288	230,192	479,407	558,485	426,682	184,950	
親会社株主に帰属する当期純利益／Profit Attributable to Owners of Parent※	326,358	306,409	287,399	153,197	359,895	338,710	186,625	285,311	229,593	174,361	102,732	(23,069)	403,325	294,895	101,217	
総資産／Total Assets	8,958,423	9,125,950	9,382,290	9,954,513	10,184,249	10,305,992	10,807,180	11,063,178	11,170,899	11,128,808	11,159,859	11,512,704	12,216,680	13,265,606	14,754,026	
純資産／Net Assets	5,700,377	5,928,769	6,182,936	6,434,792	6,397,693	6,754,000	6,964,627	7,288,881	7,160,818	7,015,305	7,081,110	7,152,554	7,342,101	7,945,729	8,107,691	

※1 償却費=減価償却費+ソフトウェア減価償却費+研究開発費+商標権償却+特許権償却／Depreciation=Amortization of Tangible and Intangible Assets+Softwear Amortization+R&D Expenses+Amortization of Trademarks and Patents

※2 2016年12月期より、「当期純利益」を「親会社に帰属する当期純利益」と記載しています。／Until FY2015, "Net Income" is documented.

# 販売費及び一般管理費内訳/Selling, General and Administrative Expenses



会計年度/ Fiscal Year	(千円/Thousands of Yen)			
	2018/12	2019/12	2020/12	2021/12
販売費及び一般管理費/ Selling, General and Administrative Expenses	6,442,351	6,672,808	6,596,073	7,270,612
人件費/ Personnel Expenses	3,997,748	4,199,711	4,239,980	4,373,984
営業費/ Marketing Expenses※1	441,300	433,346	503,042	786,958
償却費/ Depreciation※2	129,565	124,775	188,606	308,988
のれん償却費/ Goodwill Amortization	0	0	0	250
その他/ The Other Expenses	1,873,736	1,914,974	1,664,443	1,800,430
	(%)	(%)	(%)	(%)
販管費率/ Selling, General and Administrative Ratio	50.6%	50.9%	49.5%	51.8%
売上高/ Net Sales	12,738,877	13,109,578	13,332,684	14,046,171

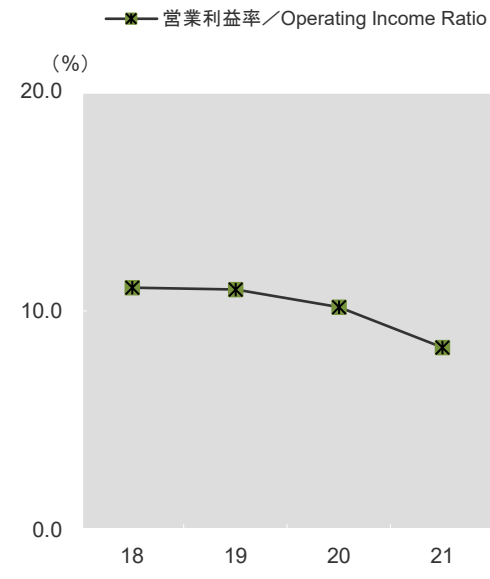
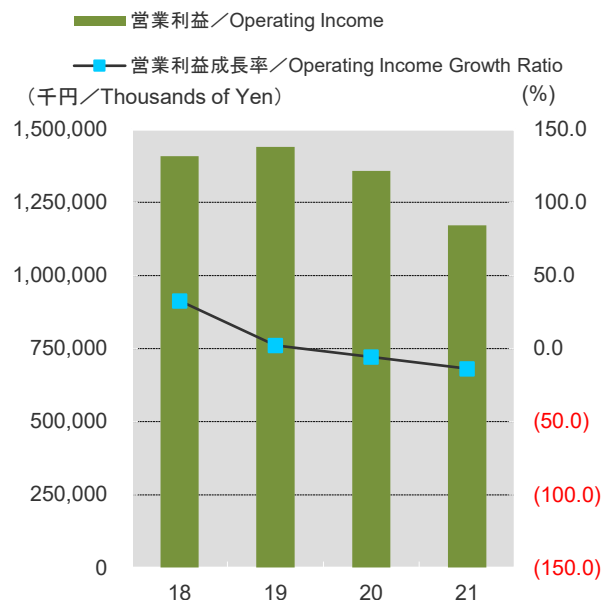
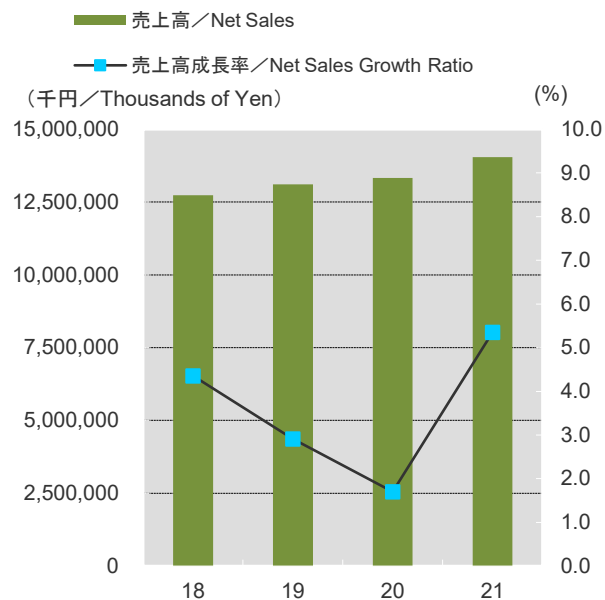
会計年度/ Fiscal Year	2019/12				2020/12				2021/12				2022/12			
	1Q	2Q	3Q	4Q	1Q	2Q	3Q	4Q	1Q	2Q	3Q	4Q	1Q	2Q	3Q	4Q
販売費及び一般管理費/ Selling, General and Administrative Expenses	1,651,169	1,688,753	1,619,507	1,713,378	1,648,580	1,606,312	1,692,385	1,648,794	1,735,928	1,845,001	1,832,419	1,857,261	1,899,696	2,060,450	2,250,934	
人件費/ Personnel Expenses	1,032,445	1,052,274	1,054,306	1,060,685	1,050,723	1,053,133	1,100,544	1,035,579	1,072,749	1,066,586	1,094,797	1,139,852	1,163,757	1,185,612	1,271,774	
営業費/ Marketing Expenses※1	115,349	121,359	85,840	110,797	115,573	117,939	129,369	140,160	156,848	231,344	201,724	197,040	185,984	268,475	315,315	
償却費/ Depreciation※2	27,805	27,842	30,646	38,481	31,765	46,064	50,862	59,914	64,162	72,034	85,773	87,019	84,271	100,727	112,125	
のれん償却費/ Goodwill Amortization	-	-	-	-	-	-	-	-	-	-	-	-	249	249	249	
その他/ The Other Expenses	475,569	487,277	448,713	503,414	450,518	389,175	411,608	413,140	442,168	475,036	450,125	433,100	465,432	505,384	551,468	
				(%)				(%)				(%)				(%)
販管費率/ Selling, General and Administrative Ratio	51.2%	52.1%	50.4%	49.9%	47.9%	48.1%	51.7%	50.3%	50.8%	53.4%	54.5%	48.8%	48.4%	51.8%	57.0%	#DIV/0!
売上高/ Net Sales	3,222,879	3,239,801	3,212,545	3,434,352	3,445,235	3,336,696	3,271,062	3,279,690	3,417,130	3,455,327	3,364,963	3,808,749	3,929,040	3,977,426	3,947,380	

※1 償却費=減価償却費+ソフトウェア減価償却費+研究開発費+商標権償却+特許権償却/  
 ※2 営業費=広告宣伝費+販売手数料+販売促進費/Marketing Expenses=Advertising Expenses+Sales Commission+Sales Promotion Expenses

Depreciation=Amortization of Tangible and Intangible Assets+Software Amortization+R&D Expenses+Amortization of Trademarks and Patents

※2 営業費=広告宣伝費+販売手数料+販売促進費/Marketing Expenses=Advertising Expenses+Sales Commission+Sales Promotion Expenses

## 成長性・収益性 / Growth & Profitability



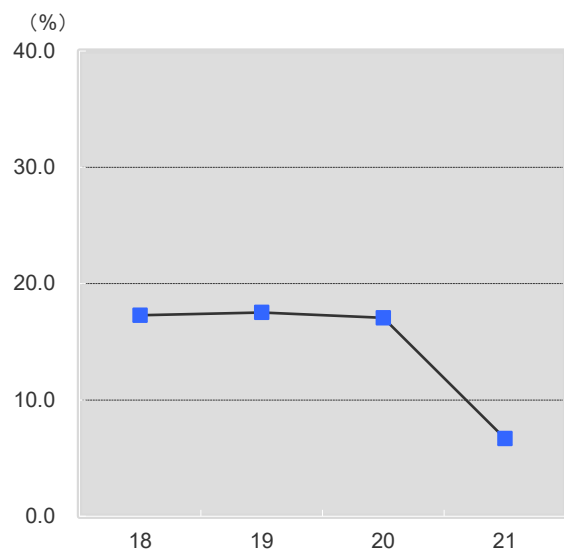
会計年度 / Fiscal Year	2018/12	2019/12	2020/12	2021/12
売上高成長率 / Net Sales Growth Ratio	4.4	2.9	1.7	5.4
営業利益成長率 / Operating Income Growth Ratio	32.7	2.2	(5.7)	(13.7)
売上原価率 / Cost of Sales Ratio	38.4	38.1	40.3	39.9
売上総利益率 / Gross Profit Ratio	61.6	61.9	59.7	60.1
営業費率 / Marketing Expenses Ratio	50.6	50.9	49.5	51.8
営業利益率 / Operating Income Ratio	11.1	11.0	10.2	8.3

売上高 / Net Sales	12,738,877	13,109,578	13,332,684	14,046,171
売上原価 / Cost of Sales	4,887,991	4,997,336	5,379,457	5,603,849
売上総利益 / Gross Profit	7,850,886	8,112,242	7,953,227	8,442,322
販売費及び一般管理費 / Selling, General and Administrative Expenses	6,442,351	6,672,808	6,596,073	7,270,612
営業費 / Marketing Expenses	441,300	433,346	503,042	786,958
のれん償却費 / Goodwill amortization	-	-	-	-
営業利益 / Operating Income	1,408,535	1,439,433	1,357,154	1,171,710

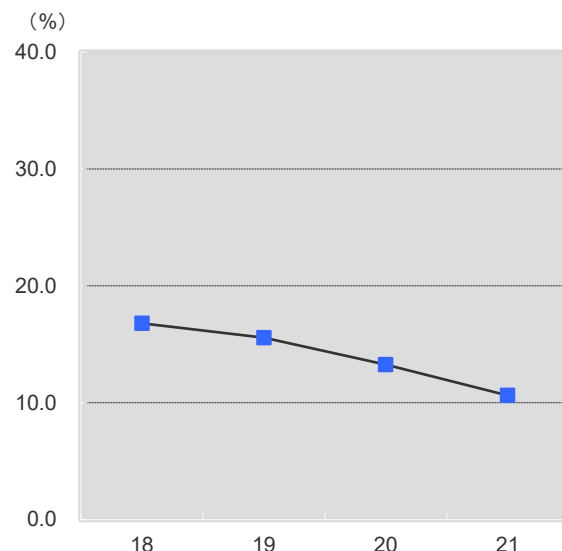
営業費 = 広告宣伝費 + 販売手数料 + 販売促進費 / Marketing Expenses = Advertising Expenses + Sales Commission + Sales Promotion Expenses

## 効率性/Efficiency

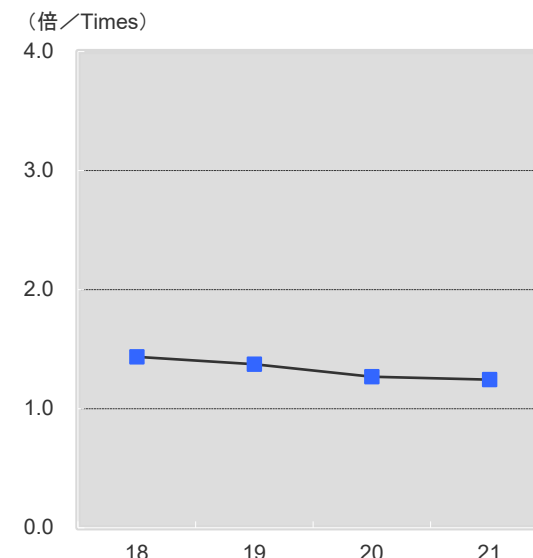
自己資本当期利益率/Return on Equity (ROE)



総資産経常利益率/Return on Asset (ROA)



総資産回転率/Asset Turnover



会計年度/Fiscal Year

		2018/12	2019/12	2020/12	2021/12
自己資本当期純利益率/Return on Equity (ROE)	(%)	17.3	17.5	17.1	6.7
総資産経常利益率/Return on Asset (ROA)	(%)	16.8	15.6	13.3	10.6
総資産回転率/Asset Turnover	(倍/Times)	1.4	1.4	1.3	1.2

ROE = (当期純利益 ÷ 期首自己資本 + 期末自己資本) / 2 × 100 / ROE = (Net Income / Average of Beginning and Ending Shareholders' Equity) × 100

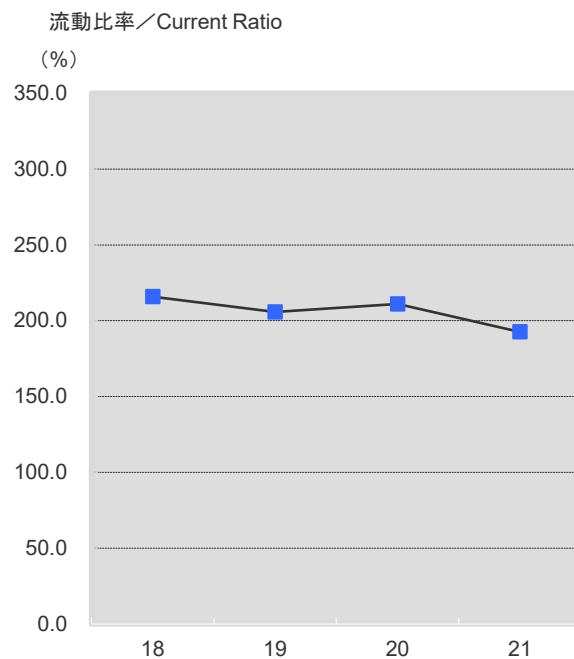
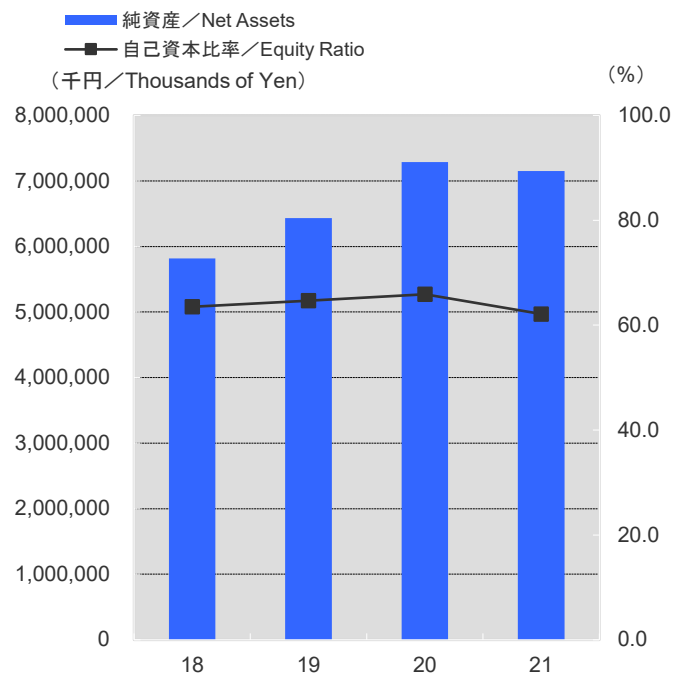
ROA = (経常利益 ÷ (期首総資産 + 期末総資産) / 2) × 100 / ROA = (Ordinary Income / Average of Beginning and Ending Total Assets) × 100

注) 上記数値については、簡略に計算しているため実際の開示資料と誤差があります。

(千円/Thousands of Yen)

売上高/Net Sales	12,738,877	13,109,578	13,332,684	14,046,171
経常利益/Ordinary Income	1,490,502	1,485,724	1,394,007	1,199,868
親会社株主に帰属する当期純利益/Profit Attributable to Owners of Parent	956,562	1,073,365	1,170,543	483,618
純資産/Net Assets	5,819,058	6,434,792	7,288,881	7,152,554
総資産/Total Assets	9,123,183	9,954,513	11,063,178	11,512,704

## 安定性 / Stability



会計年度 / Fiscal Year	2018/12	2019/12	2020/12	2021/12
自己資本比率 / Equity Ratio	63.5	64.6	65.9	62.1
流動比率 / Current Ratio	215.8	205.7	211.1	192.6
	(千円 / Thousands of Yen)	ousands of Yen)	ousands of Yen)	ousands of Yen)
純資産 / Net Assets	5,819,058	6,434,792	7,288,881	7,152,554
総資産 / Total Assets	9,123,183	9,954,513	11,063,178	11,512,704
現金及び預金 / Cash and Deposit	4,356,680	4,433,619	4,670,417	4,590,164
リース債務 / Lease Obligations	385,562	284,079	224,696	193,475
受取利息 / Interest Income	11,430	9,207	3,775	2,886
受取配当金 / Dividend Income	8,317	4,428	3,610	18,151
支払利息 / Interest Expense	8,128	4,523	3,541	3,997
流動資産 / Total Current Assets	6,579,492	6,864,534	7,390,326	7,517,205
流動負債 / Total Current Liabilities	3,048,367	3,336,472	3,500,592	3,903,187

事業関連情報\_電子認証・印鑑事業/Key Indicators\_Digital Certificate and eSignature Segment

電子認証・印鑑事業/Digital Certificate and eSignature Segment ※1

会計年度 / Fiscal Year (千円 / Thousands of Yen)	2019/12				2020/12※2				2021/12				2022/12			
	1Q	2Q	3Q	4Q	1Q	2Q	3Q	4Q	1Q	2Q	3Q	4Q	1Q	2Q	3Q	4Q
売上高 (内取含) / Net Sales	1,698,211	1,685,715	1,658,089	1,842,836	1,851,303	1,837,670	1,760,084	1,653,039	1,833,502	1,858,122	1,795,893	2,234,181	2,280,906	2,349,349	2,344,088	
売上原価 / Cost of Sales	329,711	328,773	375,654	411,473	398,818	419,169	366,440	406,084	444,847	447,000	428,664	476,248	486,063	512,184	567,839	
売上総利益 / Gross Profit	1,368,499	1,356,942	1,282,435	1,431,363	1,452,484	1,418,501	1,393,643	1,246,954	1,388,654	1,411,121	1,367,229	1,757,933	1,794,842	1,837,165	1,776,248	
販売費及び一般管理費 / Selling, General and Administrative Expense	942,326	941,898	900,807	976,906	1,009,463	984,740	1,072,694	1,023,725	1,117,099	1,238,419	1,244,721	1,270,114	1,294,025	1,434,673	1,624,016	
EBITDA	440,072	429,129	396,811	473,027	461,808	466,485	359,000	266,922	321,659	231,779	195,523	561,985	577,060	492,520	252,296	
償却費 (のれん除く) / Depreciation and Amortization ext Goodwill ※	13,900	14,086	15,184	18,571	18,787	32,724	38,052	43,693	50,105	59,078	73,016	73,916	75,994	89,780	99,816	
のれん償却費 / Goodwill amortization	-	-	-	-	-	-	-	-	-	-	-	250	249	249	249	
人件費 / Personnel Expenses	563,877	570,117	571,717	581,067	609,074	621,011	671,356	597,282	657,239	675,107	711,113	762,639	765,909	787,882	860,942	
営業利益 / Operating Income	426,172	415,043	381,627	454,456	443,021	433,761	320,948	223,229	271,554	172,701	122,507	487,819	500,817	402,491	152,231	
営業利益率 / Operating Income Divided by Net Sales	25.1%	24.6%	23.0%	24.7%	23.9%	23.6%	18.2%	13.5%	14.8%	9.3%	6.8%	21.8%	22.0%	17.1%	6.5%	#DIV/0!
従業員数 / Number of Employees Quarterly Average	438	460	458	469	479	486	486	500	501	504	513	513	529	524	524	

※1 2021年12月期第1四半期より報告セグメントを変更 / FY2021, change in reporting segments

※2 変更後のセグメント区分に基づき数値を組み替えております / Reclassified accounting figures due to changes in reporting segments

※3 償却費=減価償却費+ソフトウェア減価償却費+研究開発費+商標権償却+特許権償却 /

Depreciation=Amortization of Tangible and Intangible Assets+Software Amortization+R&D Expenses+Amortization of Trademarks and Patents

国内外別売上高 (大量発行分含) / Sales by Product

(千円 / Thousands of Yen)																
国内売上割合 / Rate of Domestic Sales	32.3%	33.0%	34.7%	33.2%	35.6%	34.3%	33.7%	33.7%	35.6%	31.5%	35.5%	35.1%	32.3%	29.7%	30.7%	
海外売上割合 / Rate of Oversea Sales	67.7%	67.0%	65.3%	66.8%	64.4%	65.8%	66.3%	66.3%	64.4%	68.5%	64.5%	64.9%	67.7%	70.3%	69.3%	

電子証明書発行枚数 (大量発行分含) / Number of SSLs Issued ※

(枚 / Sheet)																
国内発行枚数 / Number of Domestic Issues	107,645	113,845	120,766	119,359	119,770	123,528	130,195	132,499	132,782	134,849	138,852	144,288	132,876	114,832	105,054	
海外発行枚数 / Number of Oversea Issues	204,775	151,376	121,449	127,851	161,657	146,177	146,919	141,210	140,253	136,869	132,099	155,151	132,070	151,351	122,114	
合計 / Total	312,420	265,221	242,215	247,210	281,427	269,705	277,114	273,709	273,035	271,718	270,951	299,439	264,946	266,183	227,168	

※監査後の数値、大量発行分含

電子証明書有効発行枚数 / Number of SSLs validly Issued

(枚 / Sheet)																
国内有効発行枚数 / Number of Domestic validly Issues	170,201	174,511	178,549	187,016	186,872	190,997	196,512	201,455	204,563	203,992	208,118	214,855	221,775	218,865	215,329	
海外有効発行枚数 / Number of Oversea validly Issues	1,062,005	1,083,959	1,110,042	1,140,929	1,198,076	1,228,850	1,280,112	1,318,403	1,315,857	1,283,057	1,296,696	1,272,819	1,263,266	1,227,330	1,198,451	
合計 / Total	1,232,206	1,258,470	1,288,591	1,327,945	1,384,948	1,419,847	1,476,624	1,519,858	1,520,420	1,487,049	1,504,814	1,487,674	1,485,041	1,446,195	1,413,780	



事業関連情報\_クラウドインフラ事業/Key Indicators\_Cloud Infrastructure Segment

クラウドインフラ事業/Cloud Infrastructure Segment ※1

会計年度 / Fiscal Year (千円 / Thousands of Yen)	2019/12				2020/12				2021/12				2022/12			
	1Q	2Q	3Q	4Q	1Q	2Q	3Q	4Q	1Q	2Q	3Q	4Q	1Q	2Q	3Q	4Q
売上高 (内取含) / Net Sales	1,369,947	1,392,602	1,403,782	1,445,201	1,465,331	1,411,306	1,429,367	1,442,355	1,462,464	1,472,333	1,467,889	1,472,799	1,502,723	1,505,745	1,466,907	
売上原価 / Cost of Sales	811,477	847,186	868,075	941,855	929,681	891,761	905,912	907,933	897,714	921,295	912,874	968,174	946,094	971,697	986,856	
売上総利益 / Gross Profit	558,470	545,416	535,707	503,345	535,649	519,544	523,455	534,421	564,750	551,038	555,014	504,624	556,628	534,048	480,051	
販売費及び一般管理費 / Selling, General and Administrative Expenses	457,299	472,693	457,561	463,830	450,294	437,429	438,855	442,352	445,991	444,531	430,961	431,865	442,386	461,447	438,402	
EBITDA	109,738	80,855	87,996	53,472	95,139	91,926	93,704	104,385	129,263	115,977	133,210	82,425	121,329	82,052	52,745	0
償却費 (のれん除く) / Depreciation and Amortization ext Goodwill ※	8,568	8,133	9,851	13,957	9,785	9,811	9,105	12,316	10,505	9,470	9,158	9,667	7,087	9,451	11,097	
のれん償却費 / Goodwill Amortization	-	-	-	-	-	-	-	-	-	-	-	-	-	-	-	
人件費 / Personnel Expenses	274,855	278,621	281,453	268,874	270,584	258,594	256,727	263,080	266,050	253,893	249,257	246,449	256,334	257,588	255,459	
営業利益 / Operating Income	101,170	72,722	78,145	39,515	85,354	82,115	84,599	92,069	118,758	106,507	124,052	72,758	114,242	72,601	41,648	
営業利益率 / Operating Income Divided by Net Sales	7.4%	5.2%	5.6%	2.7%	5.8%	5.8%	5.9%	6.4%	8.1%	7.2%	8.5%	4.9%	7.6%	4.8%	2.8%	#DIV/0!
従業員数 / Number of Employees Quarterly Average	406	412	402	391	385	383	389	386	392	400	404	407	407	366	364	

※1 2021年12月期第1四半期より報告セグメントを変更 / FY2021, change in reporting segments

※2 償却費=減価償却費+ソフトウェア減価償却費+研究開発費+商標権償却+特許権償却 /

Depreciation=Amortization of Tangible and Intangible Assets+Software Amortization+R&D Expenses+Amortization of Trademarks and Patents

商材別売上高 / Sales by Product

(千円 / Thousands of Yen)	2019/12				2020/12				2021/12				2022/12			
共用 / Shared Server	377,211	377,411	406,542	390,959	394,742	372,648	383,761	370,784	365,972	352,989	364,520	353,919	347,979	341,559	329,008	
VPS / Virtual Private Server	135,489	135,351	130,408	123,506	127,243	131,296	130,708	122,953	121,484	119,494	115,682	110,030	107,813	105,259	104,933	
専用 / Dedicated Server	204,711	199,052	195,545	190,203	188,039	186,208	179,215	180,058	178,238	173,036	168,524	163,521	168,517	167,263	163,592	
マネージド / Managed Dedicated Server	46,124	39,250	35,273	33,400	26,688	19,866	18,698	18,156	14,958	13,645	12,920	7,542	17,963	2,685	11,584	
クラウド / Public and Private Cloud Server	342,736	342,969	334,659	340,084	342,393	338,621	338,857	340,931	352,241	348,238	341,545	344,485	345,751	346,858	337,056	
マネージドクラウド / Managed Cloud Service (CloudCREW)		9,243	27,634	65,147	113,982	96,110	105,666	142,628	172,744	218,031	218,067	244,792	276,622	311,188	355,750	
OEM	68,912	69,190	69,731	60,788	62,047	60,050	61,864	59,108	57,209	54,711	58,448	54,787	54,244	52,807	56,152	

商材別会員数 / Subscribers by Products

(利用プラン数 / Number of Active Plans)	2019/12				2020/12				2021/12				2022/12			
共用 / Shared Server	63,686	61,839	60,393	60,516	60,803	59,806	59,065	58,784	57,948	58,446	57,780	57,179	56,594	55,643	55,078	
VPS / Virtual Private Server	11,166	10,824	10,492	10,208	10,005	9,577	9,400	9,173	8,979	8,712	9,771	9,588	9,128	8,704	8,658	
専用 / Dedicated Server	2,197	2,148	2,098	2,070	2,109	2,020	1,964	1,940	1,900	1,869	1,838	1,804	1,795	1,754	1,723	
パブリッククラウド / Public Cloud Server ※3	3,863	3,824	3,726	3,758	3,994	3,775	3,715	3,695	3,657	3,614	3,591	3,578	3,623	3,565	3,568	
OEM	16,916	16,579	15,524	15,296	15,085	14,883	14,658	14,261	14,140	13,966	13,786	13,594	13,453	13,280	13,145	

※3 パブリッククラウドのみ利用件数を別から転記

## 事業関連情報\_DX事業/Key Indicators\_Digital Transformation Segment

### DX事業/DX Segment ※1

会計年度/Fiscal Year (千円/Thousands of Yen)	2019/12				2020/12※2				2021/12				2022/12			
	1Q	2Q	3Q	4Q	1Q	2Q	3Q	4Q	1Q	2Q	3Q	4Q	1Q	2Q	3Q	4Q
売上高(内取含) / Net Sales	247,972	253,436	237,586	274,668	228,945	192,682	198,005	303,029	237,126	246,563	236,645	245,749	285,164	263,953	283,632	
売上原価 / Cost of Sales	79,375	65,682	63,459	79,372	101,543	81,048	92,576	115,686	99,663	116,419	101,966	99,309	166,147	143,463	129,025	
売上総利益 / Gross Profit	168,597	187,754	174,127	195,295	127,401	111,633	105,428	187,343	137,343	116,419	134,679	146,439	119,017	120,490	154,606	
販売費及び一般管理費 / Selling, General and Administrative Expenses	299,388	324,693	309,315	322,455	236,063	228,443	229,968	233,375	218,636	211,150	202,143	201,207	208,712	208,304	232,997	
EBITDA	(125,455)	(131,318)	(129,577)		(105,469)	(113,282)	(120,835)	(42,129)	(77,623)	(77,520)	(63,867)	(51,333)	(88,506)	(86,317)	(77,179)	0
償却費(のれん除く) / Depreciation and Amortization excluding Goodwill	5,336	5,621	5,610	5,951	3,192	3,528	3,704	3,903	3,550	3,486	3,597	3,434	1,189	1,496	1,211	
のれん償却費 / Goodwill Amortization	-	-	-	-	-	-	-	-	-	-	-	-	-	-	-	-
人件費 / Personnel Expenses	193,711	203,534	201,135	210,744	171,064	173,528	172,461	175,216	149,458	137,584	134,426	130,762	141,514	140,141	155,372	
営業費 / Marketing Expenses	13,597	23,986	17,636	14,762	12,125	8,628	8,283	10,063	8,835	10,362	9,944	11,372	14,494	13,471	15,260	
営業利益 / Operating Income	▲ 130,791	▲ 136,939	▲ 135,187	▲ 127,160	▲ 108,661	▲ 116,810	▲ 124,539	▲ 46,032	▲ 81,173	▲ 81,006	▲ 67,464	▲ 54,767	▲ 89,695	▲ 87,813	▲ 78,390	
営業利益率 / Operating Income Divided by Net Sales	-52.7%	-54.0%	-56.9%	-46.3%	-47.5%	-60.6%	-62.9%	-15.2%	-34.2%	-32.9%	-28.5%	-22.3%	-31.5%	-33.3%	-27.6%	#DIV/0!
従業員数 / Number of Employees Quarterly Average	69	67	71	72	76	76	77	77	75	83	75	76	75	78	79	

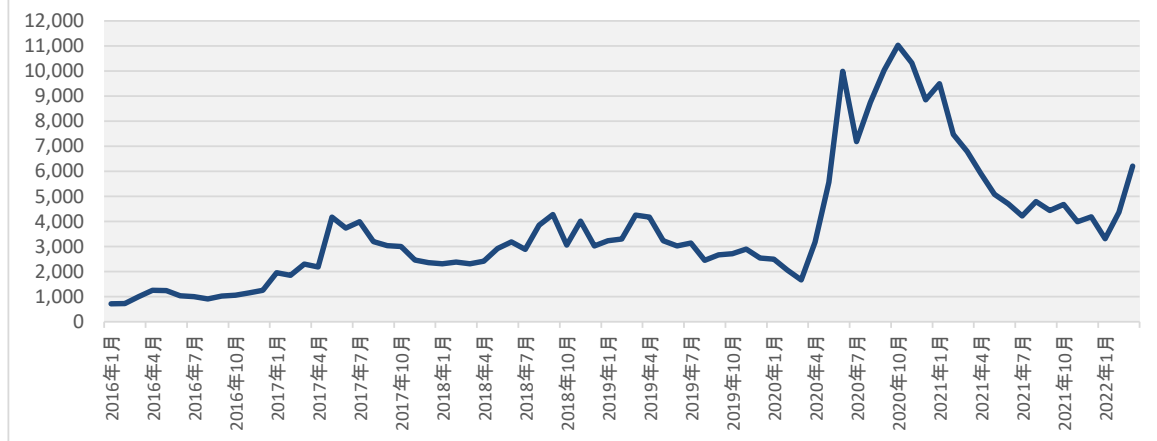
※1 2021年12月期第1四半期より報告セグメントを変更 / FY2021, change in reporting segments

※2 変更後のセグメント区分に基づき数値を組み替えております / Reclassified accounting figures due to changes in reporting segments

※3 償却費=減価償却費+ソフトウェア減価償却費+研究開発費+商標権償却+特許権償却 /

Depreciation=Amortization of Tangible and Intangible Assets+Software Amortization+R&D Expenses+Amortization of Trademarks and Patents

株価の推移 / Stock Price Trend



終値ベース / Closing price at TOKYO STOCK EXCHANGE

株価推移 / Stock Price Trend

会計年度 / Fiscal Year	2018/12	2019/12	2020/12	2021/12	(円 / Yen)
高値 / High	4,400	4,585	14,210	10,550	
安値 / Low	1,862	2,322	1,381	3,685	
終値 / Closing Price	3,025	2,546	8,850	4,185	
年間売買高 (株) / Yearly Volume (shares)	20,156,000	17,921,500	100,422,400	35,711,200	

発行済株式数 / Number of Shares Outstanding

会計年度 / Fiscal Year	2018/12	2019/12	2020/12	2021/12	(株 / Shares)
期末発行済株式数 / Number of Shares Outstanding at Fiscal Year End	11,693,000	11,693,000	11,693,000	11,693,000	

1株当たり情報 / Per Share Data

会計年度 / Fiscal Year	2018/12	2019/12	2020/12	2021/12	(円 / Yen)
1株当たり純資産 / Net Assets per Share	502.75	556.31	632.75	619.25	
1株当たり当期純利益 / Net Income (Loss) per Share	83.04	93.18	101.62	41.98	
1株当たり配当金 / Cash Dividends per Share	41.52	46.59	50.81	33.64	

\*1 株式情報は以下の株式分割を考慮した数値を記載しています。 / Stock information is based on the number of shares after the stock splits.

当社は2014年4月27日を効力発生日として普通株式1株につき100株の割合で株式分割を行っています。 / We conducted a 100-for-1 share split which became effective as of April 27th, 2014.

大株主 (上位10名) / Major Shareholders

(2021年12月31日現在 / As of December 31, 2021)

株主名 / Name of Shareholder	持株数 / Shares	議決権比率 / Controlling Share
GMO インターネット / GMO Internet, Inc.	5,966,900	51.80%
株式会社あおやま / Aoyama, Inc.	590,000	5.12%
日本マスタートラスト信託銀行株式会社 (信託口) / The Master Trust Bank of Japan, Ltd. (Trust account)	406,400	3.53%
BBH (LUX) FOR FIDELITY FUNDS PACIFIC FUND	215,200	1.87%
青山 満 / Mitsuru Aoyama	197,531	1.71%
株式会社日本カストディ銀行 (信託口) / Custody Bank of Japan, Ltd. (Trust account)	179,500	1.56%
NOMURA PB NOMINEES LIMITED OMNIBUS - MARGIN (CASHPB)	176,000	1.53%
GMOグローバルサイン・ホールディングス株式会社 / GMO GlobalSign Holdings K.K.	173,616	-
水谷 量材 / Ryoza Mizutani	113,700	0.99%
TOKAI TOKYO SECURITIES (ASIA) LIMITED	86,000	0.75%

所有者別分布状況 / Composition of Shareholders by Category

所有者別分布状況 / Composition of Shareholders by Category	株式数 / Shares	構成比 / (%)
金融機関 / Financial Institutions	713,000	6.10%
金融商品取引業者 / Securities Companies	283,533	2.42%
その他法人 / Other Corporations	6,549,066	56.01%
*1 外国法人等 / Foreign Corporations	1,157,740	9.90%
*1 個人・その他 / Individuals and Other	2,816,045	24.08%
*1 自己名義株式 / Treasury Stock	173,616	1.48%
*1 合計 / Total	11,693,000	100.00%

株主還元指標 / Shareholder Return Data

会計年度 / Fiscal Year	2017/12	2018/12	2019/12	2020/12	2021/12	(%)
*1 連結配当性向 / Payout Ratio	50.0	50.0	50.0	50.0	50.0	80.1
*1 連結総還元性向 / Return to Shareholders Ratio	50.0	50.0	50.0	50.0	50.0	80.1

配当性向 = 1株当たり配当金 ÷ 1株当たり当期純利益 × 100

\*1 Payout Ratio = Cash Dividends per Share ÷ Net Income per Share × 100

\*1 総還元性向 = (配当金総額 + 自社株式取得総額) ÷ 当期純利益 × 100

\*1 Return to Shareholders Ratio = (Cash Dividends + Share Buybacks) ÷ Net Income × 100

## 会社概要 / Corporate Profile

2022年9月30日現在 / As of September 30, 2022

<b>社名</b>	GMOグローバルサイン・ホールディングス株式会社	<b>Corporate Name</b>	GMO GlobalSign Holdings K.K.
<b>所在地</b>	〒150-8512 東京都渋谷区桜丘町26番1号 セルリアンタワー10F 03-6415-6100	<b>Head Office</b>	10F Cerulean Tower, 26-1, Sakuragaoka-cho, Shibuya-ku, Tokyo 150-8512, Japan +81-3-6415-6100
<b>設立</b>	1993年12月	<b>Founded</b>	December, 1993
<b>従業員数</b>	967 名	<b>Number of Employees</b>	967
<b>資本金</b>	916 百万円	<b>Paid in Capital</b>	916 million
<b>決算期</b>	12月31日	<b>Fiscal Year End</b>	December 31st
<b>株式の総数等</b>	34,360,000 株	<b>Number of Shares Authorized</b>	34,360,000 shares
<b>発行済株式総数</b>	11,693,000 株	<b>Number of Shares Outstanding</b>	11,693,000 shares
<b>株主数（自己株式含む）</b>	7,732 名	<b>Number of Shareholders</b>	7,732
<b>単元株式数</b>	100 株	<b>Stock Transaction Unit</b>	100 share
<b>上場市場</b>	東京証券取引所 プライム市場	<b>Stock Listing</b>	TOKYO STOCK EXCHANGE, PRIME
<b>証券コード</b>	3788	<b>Stock Code</b>	3788